



GEORGETOWN UNIVERSITY - GTU

@ Washington DC, United States



- Georgetown University is a prestigious and historic institution; amongst the leaders in academic and research.
- It is ranked #22 out of 443 National Universities.
- Part of their Alumni network is made up of former presidents, US congress members, renowned professionals of the scientific & medicine industry.
- Learn more about this institution [here](#).

GEORGETOWN UNIVERSITY - GTU

@ Washington DC, United States

“UNDERSTANDING TODAY’S BUSINESS ENVIRONMENT”

- Program dates: April 29, 2024 – May 3, 2024
- Price per person: 2.800€
- Included in the Price:
 - ✓ Training and delivery of the program
 - ✓ Welcome session
 - ✓ Company visits
 - ✓ Campus Tour
 - ✓ Closing ceremony
 - ✓ Award of completion
- Campus location: 2115 Wisconsin Ave NW, Washington, DC 20007, EE. UU (TBC)
- Program delivered in English

The theme of the program is “International Business” and is centered around a deeper understanding of business and society in the United States. The one-week program includes academic sessions led by Georgetown University faculty and experts. The program also includes two professional site visits with a business, organization, association, or government entity which provides a unique opportunity to network internationally. Students that complete the program will be given a certificate of completion.

Intended Learning Outcomes

- An interactive curriculum of classroom sessions led by renowned faculty and professional site visits led by leaders in business and government allow students and executives from around the world to gain an insider view on how business and government function in the United States.

Students who complete the program will be given a certificate of completion issued by Georgetown University.

Indicative.
Subject to change

April 28 Sunday	April 29 Monday	April 30 Tuesday	May 1 Wednesday	May 2 Thursday	May 3 Friday
<p>GEORGETOWN UNIVERSITY <i>37th and O Street, NW Washington, DC 20057</i></p> <p>WiFi On Campus GuestNet / no password needed</p>	<p>9:30 Meet CIED Representative at the Campus Main Gates <i>37th and O Street, NW Washington, D.C. 20057</i></p> <p>9:30 – 10:15 Campus Tour With CIED Representative</p> <p>10:15 – 10:30 Program Opening & Orientation</p> <p>10:30 – 12:30 AMERICAN CULTURE AND MANAGEMENT Prof. José Luis Guerrero-Cusumano</p> <p>12:30 – 13:45 <i>LUNCH</i></p> <p>14:00 – 16:00 LECTURE: GLOBAL MARKETING Prof. Charles Skuba</p>	<p>10:30 – 12:30 LECTURE: CHALLENGES IN TIMES OF GLOBALIZATION Prof. Luis Bitencourt</p> <p>12:30 <i>FREE TIME / LUNCH</i></p> <p>14:30 – 16:30 SITE VISIT: WORLD BANK <i>1818 H St NW, Washington, DC 20433</i></p>	<p>10:00 – 12:00 LECTURE: FUNDAMENTALS OF AMERICAN POLITICS Prof. Eric Langenbacher</p> <p>12:00 <i>FREE TIME / LUNCH</i></p> <p>14:00 – 16:00 SITE VISIT: INTER-AMERICAN DEVELOPMENT BANK (IDB) <i>1300 New York Ave NW, Washington, DC 20577</i></p>	<p>10:30 – 12:30 LECTURE: EXPLORING ARTIFICIAL INTELLIGENCE & INTERNATIONAL BUSINESS Prof. José Luis Guerrero-Cusumano</p> <p>12:30 <i>FREE TIME / LUNCH</i></p>	<p>10:30 – 12:30 LECTURE: CASE PRESENTATION Prof. José Luis Guerrero-Cusumano</p> <p>12:30 – 13:00 Evaluation & Certificate Ceremony Program Director, Prof. José Luis Guerrero-Cusumano and CIED Representatives</p>

CORPORATE WORLD



PLEASE USE AS REFERENCE. SUBJECT TO CHANGE AND AVAILABILITY

Some of the companies
visited in past editions



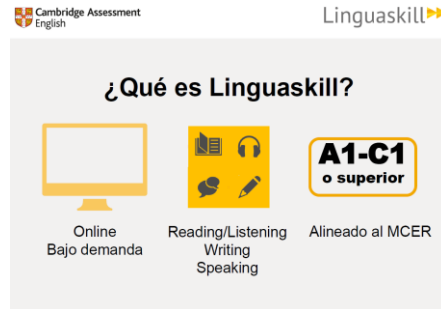
ELIGIBILITY TO ATTEND ILCs

REQUIREMENTS TO BE ELIGIBLE TO ATTEND THE BST

- ✓ Be willing to learn and make the most out of this incredible Experience! 😊
- ✓ Follow the registration process and meet the deadlines and requirements
- ✓ Submit proof of B2-C1 level of english:
 - ❑ Submit proof of B2-C1 level of english, either through **valid previously earned certificates** and/or **proof of having worked/studied** in anglo saxon countries
 - ❑ You can take esic language school level test (extra fees apply)

CAMBRIDGE ASSESSMENT – LINGUASKILL

- FORMAT: online in ESIC or remote from your home
- 4 SKILLS: Speaking (15mins), Writing (45mins), Reading/Listening (85mins)
- PRICE: 110-150€*
- WHERE? www.esicidiomas.com
- WHEN? Mondays/Fridays: 3-6pm



Cambridge Assessment English

Linguaskill ▶▶

¿Qué es Linguaskill?

Online Bajo demanda

Reading/Listening Writing Speaking

Alineado al MCER

A1-C1
o superior

The graphic features the Cambridge Assessment English logo at the top left and the Linguaskill logo at the top right. Below the title '¿Qué es Linguaskill?', there are three icons: a computer monitor representing 'Online Bajo demanda', a book and headphones representing 'Reading/Listening Writing Speaking', and a badge representing 'Alineado al MCER' with 'A1-C1 o superior' written on it.

FLEXIBLE:

TWICE A WEEK: MONDAYS (REMOTE) FRIDAYS ESIC MADRID

FAST:

RESULTS IN 48HRS

FAIR:

SECOND ATTEMPTS POSSIBLE TO INCREASE GLOBAL SCORE

PRECISE:

CEFR GRADE FOR EVERY SKILL



PAYMENT INFORMATION

PAYMENT INFORMATION

Options at your disposal

WIRE TRANSFER

Directly to esic bank account.

This is the best option for payments processed from spanish accounts.

FLYWIRE

Through the link we will provide.

This is the best option for international payments.

PLEASE KEEP IN MIND:

Once you have registered to one of the BSTs, you will receive further information regarding the payment, such as:

- Bank details & payment submission required information
- Flywire link

(!) Payments in cash or with credit/debit cards are not accepted



INSURANCE POLICY

INSURANCE POLICY

ADDITIONAL COST: 40€ p/p*

*Indicative Price & services, subject to insurance company


MAPFRE SPAIN

1. PERSONAL ASSISTANCE COVERAGE

- * SANITARY TRANSFER OR REPATRIATION, IN CASE OF ILLNESS OR ACCIDENT OF THE DISPLACED INSURED
- * MEDICAL ASSISTANCE DUE TO ILLNESS OR ACCIDENT OF THE INSURED MOVED OUTSIDE THEIR COUNTRY OF USUAL RESIDENCE - OUTSIDE THE COUNTRY OF USUAL RESIDENCE OF THE INSURED (LIMIT 3000 EUROS.)
- * MEDICAL ASSISTANCE FOR ILLNESS OR ACCIDENT OF THE INSURED DISPLACED WITHIN THEIR COUNTRY OF USUAL RESIDENCE - IN THE COUNTRY OF USUAL RESIDENCE OF THE INSURED (LIMIT 600 EUROS.)
- * TRANSFER OR REPATRIATION OF THE DECEASED INSURED
- * DISPLACEMENT OF THE COMPANION OF THE HOSPITALIZED INSURED - DUE TO HOSPITALIZATION OF THE INSURED OVER 5 DAYS - DUE TO THE DEATH OF THE INSURED
- * ACCOMMODATION FOR THE COMPANION OF THE HOSPITALIZED INSURED - UP TO 42 EUROS/DAY - MAXIMUM 10 DAYS (LIMIT 420 EUROS.)
- * EXTENSION OF THE INSURED'S STAY DUE TO ILLNESS OR ACCIDENT - UP TO 42 EUROS/DAY - MAXIMUM 10 DAYS (LIMIT 420 EUROS.)
- * EARLY RETURN OF THE INSURED DUE TO THE DEATH OF A FAMILY MEMBER - UP TO THE SECOND DEGREE
- * EARLY RETURN DUE TO SERIOUS ACCIDENT AT YOUR USUAL RESIDENCE OR PROFESSIONAL PREMISES
- * TRANSMISSION OF URGENT MESSAGES

2. BAGGAGE COVERAGE

- * COMPENSATION FOR DEFINITIVE LOSS, THEFT, OR EXTERIOR DAMAGE TO BAGGAGE CHECKED IN FLIGHT - CARRIER'S CERTIFICATE (LIMIT 600 EUROS.)
- * INDEMNITY FOR DELAY OF BAGGAGE CHECKED IN FLIGHT (LIMIT 90 EUROS.)
- LOCATION AND SHIPPING OF LUGGAGE AND PERSONAL EFFECTS

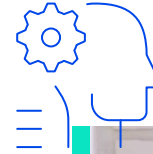
A hand is holding a white document with the text "Terms and Conditions" printed on it. The document is partially obscured by a blue background that features a large white L-shaped graphic element. The text "TERMS & CONDITIONS" is also visible on the blue background.

Terms and Conditions

TERMS & CONDITIONS

TERMS & CONDITIONS

- Attendance to the entire program is mandatory to obtain the certificate of completion
- Due to forc e majeure schedule, destination, pricing, availability, partner and overall conditions are subject to change
- The reservation of flights, transfers, or similar items not included in the ILC fee, is under students' management; nevertheless, we can put you in touch with an agency
- ESIC is not responsible for possible visa requirements or any other legal requirement to enter the country.
- **The minimum number of students for the program to take place is 15.** The inability to achieve this minimum may result in the cancellation of the program **or an increase in price to cover costs.**
- You must be able to prove at least a B2 level of English, for example: Valid previously earned certificates, esic languages level test, proof of having lived/worked in an anglo saxon country, ...
- Cancellation policy for students:
 - The student cancels after registration: **100% of the fee is charged to the student**
- Any additional cost related to COVID or similar, will be undertaken by the student
- Any additional cost related to the students' negligence, possible damages in any of the facilities attended during the course, or similar will be undertaken by the student





OTHER IMPORTANT
INFORMATION

OTHER IMPORTANT INFORMATION

VISA REQUIREMENTS

USA

Some nationalities (EU citizens, for example) can enter the country as tourists ([ESTA required](#)) and do not require a visa to take the one week course. Consult your requirements depending on your nationality. In the event you require a visa, then you can apply for a Tourism and Visit (B-2) Visa.

Your passport must be valid for at least six months beyond your period of stay in the United States.

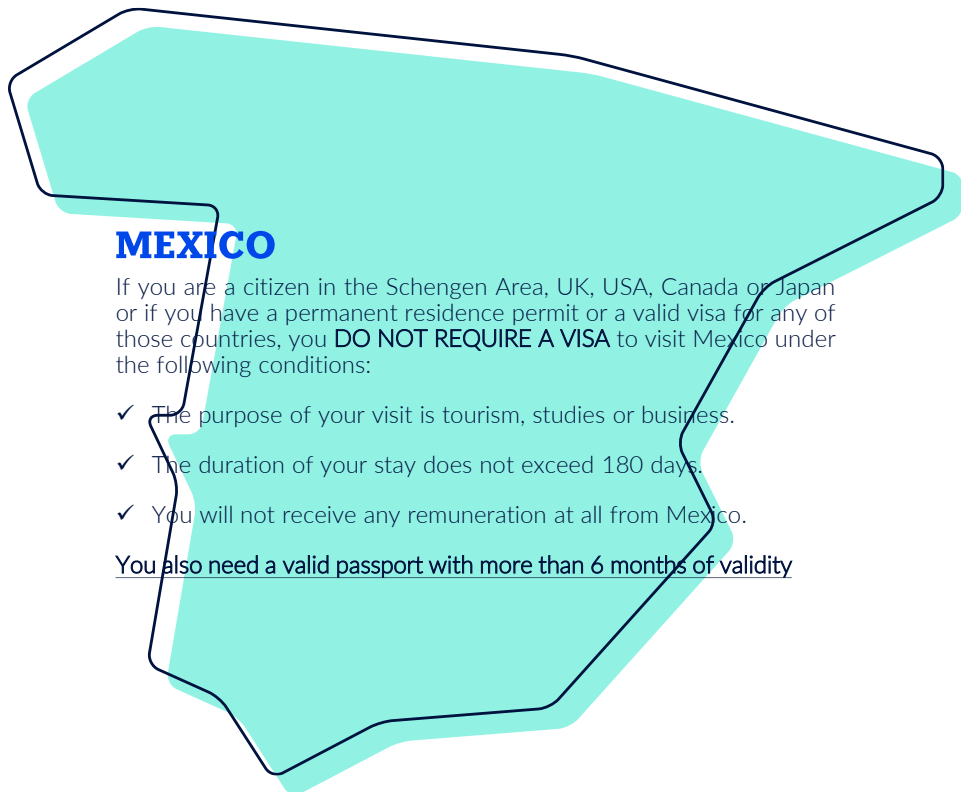
ENGLAND

Some nationalities (EU citizens, for example) can enter the country as tourists and do not require a visa to take the one week course.

[Consult your requirements depending on your nationality.](#) In the event you require a visa, then you can apply for a Visitor Visa.

You also need a valid passport to enter the UK. It should be valid for the whole of your stay.

If you do need a visa, please **take into consideration the processing time which can vary from 30 to 90 (or more) days, depending on the country of issue.**



MEXICO

If you are a citizen in the Schengen Area, UK, USA, Canada or Japan or if you have a permanent residence permit or a valid visa for any of those countries, you **DO NOT REQUIRE A VISA** to visit Mexico under the following conditions:

- ✓ The purpose of your visit is tourism, studies or business.
- ✓ The duration of your stay does not exceed 180 days.
- ✓ You will not receive any remuneration at all from Mexico.

You also need a valid passport with more than 6 months of validity

DOUBTS?

CONTACT

study.tours@esic.edu

Hvala vam Fale.
Dziękuję Ci Vielen Dank
Merci Faleminderit Děkuji omadlobt
Дзякуй **Thank you!** Merci Th
ziękuję Ci
uji Gracias omadlobt Dank je Дзя
ськіуі Vielen Dank Grazie Dziękuję
lobt Hvala vam Vielen D
Děkuji Thank you Me

